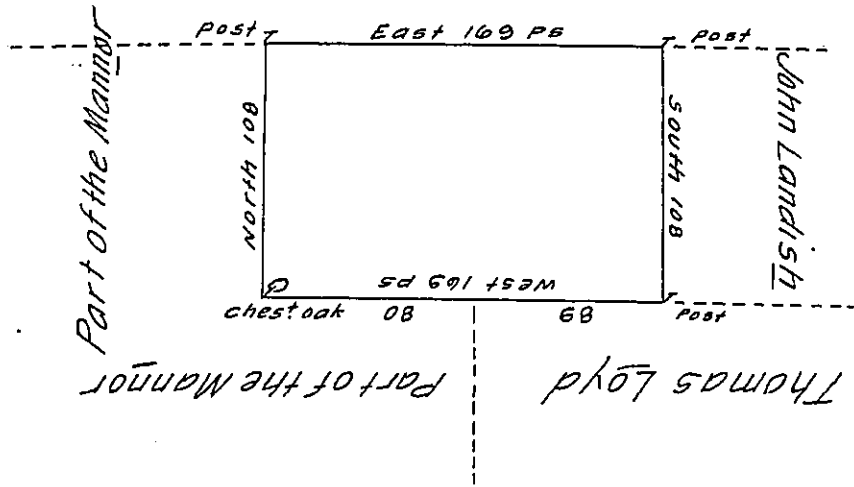


*the Manor Line*



Pursuant to a Verbal Order from the Hon<sup>ble</sup> the Proprietor. Surveyed to Jacob Stout on the 9<sup>th</sup> day of December 1738 the above Described Tract of Land being part of the Manor of Richland in the County of Bucks. Cont. 107 acres and a half with Allowance of Six & Cent.

Nich<sup>o</sup> Scull. —

May 25<sup>th</sup> 1747

Jacob Pyddelman 107<sup>ac</sup> in Richland Manor in Bucks County - Surveyed by Warrant of the 30<sup>th</sup> day of January 1739 to Jacob Stout who Assigned his Right to the said Piddleman for whose use the Survey is now order'd to be returned.

Richard Peters —

To William Parsons }  
Surveyor General }

IN TESTIMONY that the above is a copy of the original remaining on file in the Department of Internal Affairs of Pennsylvania, made conformably to an Act of Assembly approved the 16th day of February, 1833, I have hereunto set my Hand and caused the Seal of said Department to be affixed at Harrisburg, this twenty seventh day of May 1910.

*Henry Howell*  
Secretary of Internal Affairs.